

WIRELESS

“New wireless detector with SMA technology”

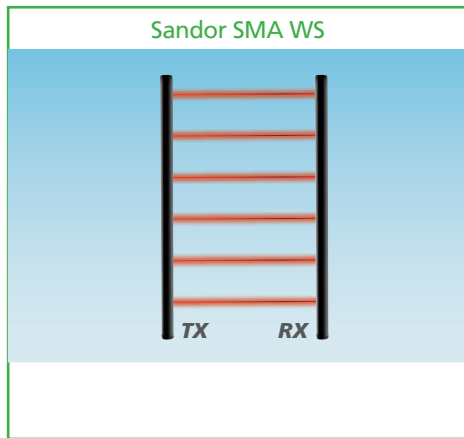
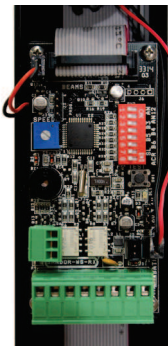
SANDOR SMA WS

The SANDOR SMA WS range of barriers is made up from two, TX & RX, beam towers. The new electronics using **AUTO RECOGNITION OF THE OPTICS** can control 2 to 6 beams each with dual optics and SMA technology. The state of the art electronics guarantee better reliability and reduced power consumption with up to 36 months battery life, which can vary depending on the number of beams installed in the columns. Optical sync is employed and the range is limited to 50metres to keep false alarms to a minimum in critical weather due to not being able to instal heaters for obvious reasons. OR / AND operating, Response time and Environmental output functions are set using the dip switches. The separate alarm and tamper outputs can be connected to commonly used radio transmitters, which are housed in the RX column. The TX column tamper alarm is relayed optically to the RX. An audible low battery warning is given during beam interruption. An alarm condition is generated in the event of the batteries being completely discharged thanks to the “fail in alarm” micro relay.

The low battery and environmental outputs can remotely controlled using the dedicated outputs on the control board.

Two or three beam SANDOR SMA WS towers are compatible with **PARVIS SMA WS 2+2 o 3+3**.

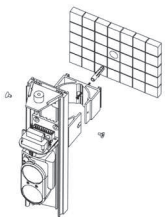
RX MOTHER BOARD



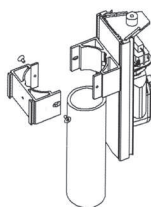
RX OPTICS SMA



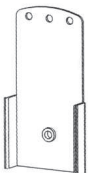
SAN/PL WALL MOUNT



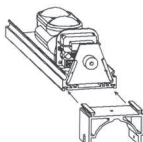
SAN/PL POLE MOUNT



SAN/SD WALL MOUNT



BRACKET ON A BAR INSTALLATION



Technical specifications pg. 32

FEATURES

- Outdoor Range 50 m
- Low Battery indication
- Environmental Module
- Crawl Detect
- OR – Random or First Two Beams AND
- Beam 2-3-4-5-6 selector
- Adjustable Response Time
- TX tamper relayed to the RX

TAMPER

3 YEAR BATTERY LIFE